

# HIGH SPEED DOOR

SMOOTH A



Control system : Mitsubishi Inverter  
Mitsubishi PLC and other components  
Dynamical system : SEW Germany Motor  
0.75 / 1.5/ 2.2 KW, 220V/380V.

## TECHNICAL DATA

Opening Speed	1.2 / Sec.(Adjustable)
Closing speed	0.8 / Sec.(Adjustable)
DW min./max.	1,500 - 6,000 m.
DH min./max.	2,000 - 6,000 m.
Power supply	1 phase /220 V / 20-25A / 50Hz
Drive motor	Gear motor 0.75 - 1.5Kw./ IP 55
Controller systems	Encoder / Limiter
Top Cover	Standard : Stainless Steel 304 Optional : Stainless Steel 201 Paint color coating
Side Frame	Standard : Stainless Steel 304 Optional : Stainless Steel 201 Paint color coating
Motor Cover	Standard : Stainless Steel 304 Optional : Stainless Steel 201 Paint color coating
Control Box	Standard : Stainless Steel 304 Optional : Stainless Steel 201 Paint color coating
Door curtain	PVC Curtain Thickness 0.9-1.2mm High -density polyester fabric
Reinforce Girder	Aluminium
Buttom Bar	Aluminium
Brush seal	Black Color
Wind Resistance	Class 1 (80km/h)
Safety features	Electronic safety eage Photoeletronic safety sensor Airbag Safety System
Working temperature	-30 °C +70 °C



# HIGH SPEED DOOR

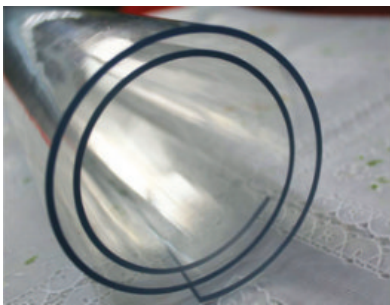
SMOOTH A



## Door Curtain

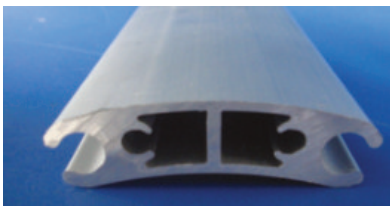
**Fire Proof : LEVEL 2**

1. Type of German Door Curtain
2. Thickness: 0.9-1.2mm
3. PVC Material
4. Maximum Resistant Cold Temperature:  $-40^{\circ}\text{C}$
5. With High-tech Nanotechnology Double-sided
6. Never contamination dust, bright as new
7. Dimension Size: Length: 1.5M, 50M / Per Coiling
8. Selected Color: Blue / Orange / Gray / Yellow



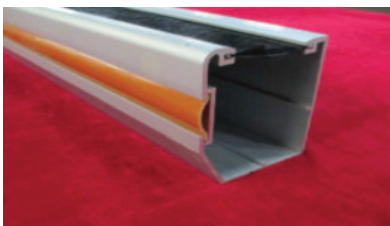
## Transparent Curtain

1. Type of Transparent Door Curtain
2. Thickness: 1.2mm PVC Material
3. Dimension Size: Width: 0.7M, Length: Confirmed According to Customer's request.
4. Type of Transparent Door Curtain Feature:
  - Surface smooth and flawless
  - Good at Visual transparency
  - Manufacturing with New Technic and New Material



## Anti-Wind Aluminum Strip

Reinforced Industrial Aluminum Wind-Proof Strip  
Thickness : 0.9mm-2.0mm  
Low Maintenance Cost



## Aluminum Track with Sealing Brushes

Interior Sealing Brushes  
Better Performance than traditional Brushes



# HIGH SPEED DOOR

SMOOTH A



**Mitsubishi Inverter**



**Control Box**



**Main Shaft**

Motor Main Shaft ( Heat Treatmeant,  
Excellent Wear Resistance Performance )



**Round Plate**

Laser Beam Cutting



# HIGH SPEED DOOR

SMOOTH A



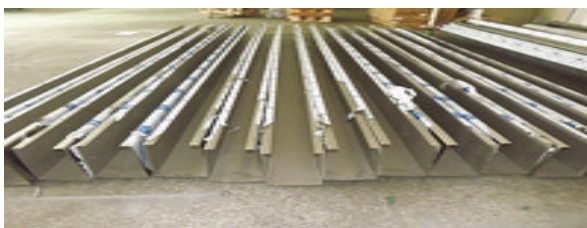
## Big Beam Pipe

Thickness 2.5mm Material :  
Steel with oil coating 6 Meters per Piece  
Can be welded to any length



## SEW Germany Motor

0.75 KW / 1.5 KW / 2.2 KW



## Head Cover & Motor Cover Frame

304 Stainless Steel



## Bottom Beam

Anodised Aluminum Bottom Beam + EPDM



# HIGH SPEED DOOR

SMOOTH A



**Radar Sensor**  
Automatic Sensoring



**Airbag Safety Systems**

Wireless low voltage air sac ,  
Voltage : 12V



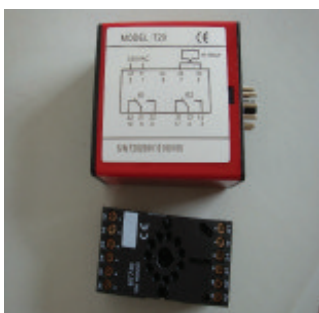
**Photocell Sensor**

For Door width <3.5m.,3.5-6.0 m

**CAN BE OPTIONAL**

**Remote Control**

One Set includes :  
1 pcs receiver + 2 Remoters



**Magnetic sensor**

Inspect Metal ,  
human body can not be inspected



# HIGH SPEED DOOR

SMOOTH A



## PVC CURTAIN

### Specification

Polyester fiber and the surface coating processing

## PVC CURTAIN

Thickness

0.9-1.2 mm.

## PVC TRANSPARENT WINDOW

Thickness

0.9-1.5 mm.

